



CCTM IA CLAIMS DOCUMENT (ICD) Vodafone Ltd

Secure Remote Access
2.8

VENDOR DETAILS	TEST LABORATORY DETAILS
Vodafone Ltd	Logica UK Ltd
Vodafone House The Connection Newbury BERKS RG14 2FN	Logica 250 Brook Drive Green Park Reading RG2 6UA
Telephone Number: 0845 8339710	Telephone Number: 01372 369 619
Email: dl-vsra.cctm@gb.vodafone.co.uk	Email: hugh.griffin@logica.com
Website: WWW.Vodafone.Com	Website: www.logica.com

CERTIFICATE DETAILS	
CCTM Certificate Number	2010/01/0066
CCTM Awarded on	20 th January 2010
CCTM Award Expires on	19 th January 2011
ICD Issue Date	20 th January 2010

TABLE OF CONTENTS

1 INTRODUCTION..... 3

 1.1 Background 3

 1.2 Objectives 3

 1.3 Purpose of Document 3

 1.4 Structure..... 3

2 IS PRODUCT DESCRIPTION..... 4

 2.1 Product Identification..... 4

 2.2 Product Overview 4

 2.3 Usage assumptions..... 6

3 CCTM CLAIMS FOR VSRA 2.8 8

 3.1 Claims Statements 8

 3.2 Existing assurance certificates 9

1 INTRODUCTION

1.1 Background

This document outlines the IA claims made by Vodafone UK Ltd in regard to the suitability of Vodafone Secure Remote Access 2.8 for use by the UK Public Sector for securing and monitoring mobile computers.

1.2 Objectives

1.2.1 The objectives of this ICD are to provide:

- A description of the Vodafone Secure Remote Access product
- Details of its expected usage
- Details of the Information Assurance (IA) claims made for the Vodafone Secure Remote Access product.

1.3 Purpose of Document

1.3.1 This document is the ICD for Vodafone Secure Remote Access 2.8

1.3.2 This ICD is the baseline document for the CCTM Claims Test of Vodafone Secure Remote Access 2.8.

1.4 Structure

The structure of this ICD is as follows:

- Section 1 (this section) contains the introductory material.
- Section 2 contains the description of functionality of Vodafone Secure Remote Access 2.8 and all the information related to the security of Vodafone Secure Remote Access 2.8.
- Section 3 details the security functionality claims that are being made.

2 IS PRODUCT DESCRIPTION

2.1 Product Identification

Product Name: Vodafone Secure Remote Access

Version: 2.8

Platforms:

Operating System	Notes
Windows XP Professional	Supported and tested SP3

2.2 Product Overview

Vodafone Secure Remote Access is an Integrated Policy-Driven Remote Access Solution which addresses the *multiple challenges* of providing remote access:

Connectivity. It allows Remote Workers with laptops or home PCs to connect to their office network from multiple access networks worldwide including Mobile, Fixed Dial-Up, Integrated Services Digital Network (ISDN), Wi-Fi, Hotel Broadband and Home Broadband. It provides a simple user interface for all networks.

Security. It will also enforce company Information Technology (IT) security policies to minimise the risk of security breaches. It can be configured to tear down prohibited applications such as consumer Instant Messaging.

Control. Vodafone will offer a range of packages with predictable monthly costs for all bearer usage in a single bill, tailored to a range of profiles from home worker all the way to frequent international traveller. VSRA support is provided through a single customer interface into Vodafone.

Reporting. Management Information is available across all bearers and is provided on a monthly basis.

2.2.1 Security architecture

At the centre of the VSRA architecture is the Fiberlink Extend360 Management Centre. As soon as the user connects to the internet either via mobile data, WiFi or fixed bearers, the client access the Fiberlink Management Centre to ensure all the client settings for that user are current and download updates for any that have changed. Security policy settings are persistent over a device reboot and will continue to be enforced until updated settings appear on the server. This level of control and mode of operating builds upon the Vodafone Mobile Connect offering which merely provides access over a mobile network.

A core feature of VSRA is that it seamlessly integrates with a customer's existing security products such as Anti-Virus, VPN and Personal Firewall.

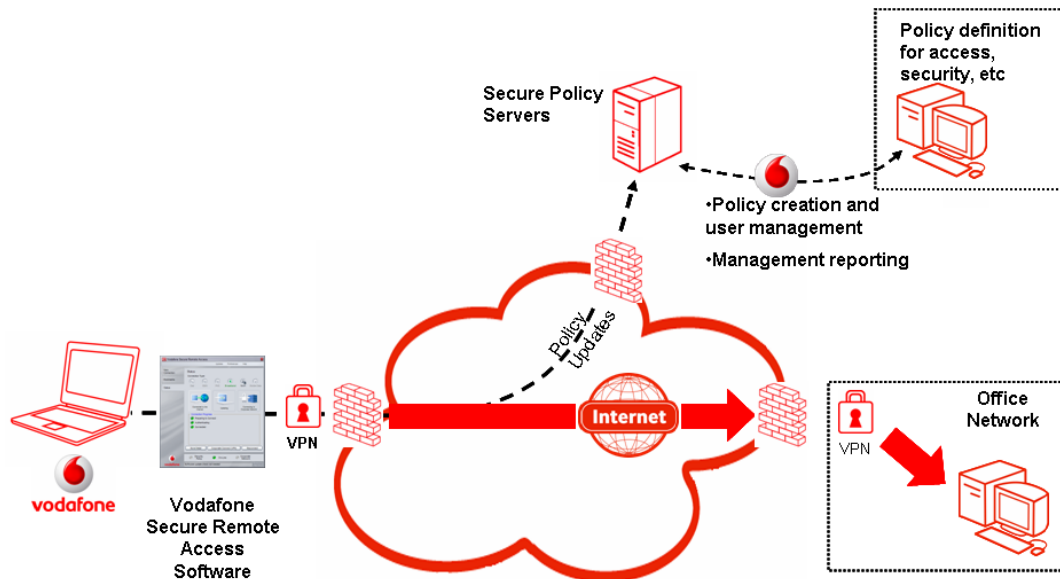


Figure 2: VSRA System Architecture

Vodafone provides customers with a Managed Service to control the policy updates and user profiles on the Fiberlink Management Centre architecture and other downstream systems.

The key technology components of the VSRA service are as follows:

Vodafone Secure Remote Access software which includes both a Connectivity Manager and an Enforcement Agent.

VSRA Management Centre

IT Admin Management and Control Capabilities, fully managed by Vodafone on behalf of the customer.

2.2.2 Hardware requirements

VSRA has the following minimum recommended system requirements:

- **Processor:** Pentium III, 500MHz
- **Random Access Memory (RAM):** 512 MB (1 Gigabyte recommended)
- **Available Hard Disk Space:** 200 MB
- **Screen Resolution:** Video Graphics Array (VGA) Resolution (16-bit or 24-bit colour SVGA) **Note:** Although the minimum recommendation is VGA resolution, a screen resolution of 1024x768 provides better viewing results.

Connectivity devices

It is not necessary that each of these be present but for Vodafone Secure Remote Access to interact with a given component it must meet these requirements.

- **Dial/ISDN** - Windows compatible modem
- **Broadband** - Network Interface Card
- **Mobile Data** - Most popular wireless cards and devices
- **Wi-Fi** – 802.11 card with Network Driver Interface Specification (NDIS) 5.1 (or higher) compliant drivers

2.2.3 Software requirements

Internet Explorer 6 SP1 or later.

2.2.4 Out of Scope

Control and monitoring of ISDN functionality.

Performance of product on any version of Windows other than Windows XP Professional SP3.

Use of Vodafone Secure Remote Access Version 2.8 in conjunction with any data at Impact Level 3 (IL3)/RESTRICTED or higher.

Functionality of other security products available with but not part of Vodafone Secure Remote Access.

2.3 Usage assumptions

2.3.1 Assets

Vodafone Secure Remote Access is intended to be installed on and protect an individual PC holding data at up to Impact Level 2 (IL2). By extension it also protects the corporate environment that the individual PC connects to.

2.3.2 Threat scenario

Threats to assets which are countered are:

- Shutdown of security software on the PC.
- Running of prohibited software.

2.3.2.1 Expected operational environment

Vodafone Secure Remote Access is deployed by corporate clients who wish to improve lockdown and monitoring of remote PCs.

Current organisations employing Vodafone Secure Remote Access vary from an NHS trust with approximately one hundred devices

deployed to a major UK bank with eighteen thousand devices deployed.

2.3.2.2 Organisational security policies

The purpose of Vodafone Secure Remote Access is to monitor and enforce corporate policies regarding the use of remote PCs. In order for this to be effective it is essential for the organisation to have formulated and communicated these policies. Vodafone does not mandate what these policies should be but will work with an organisation to ensure the VSRA settings are monitoring and enforcing appropriately for the policies chosen by the organisation.

2.3.2.3 Security requirements on the environment

Vodafone Secure Remote Access is not intended to function as a complete stand alone security solution for the PCs it is installed on. The foundation of any computer's security is the use of a properly configured and patched version of the selected operating system. At a minimum it is additionally expected that Anti-Virus software and a VPN client would be installed on each machine.

3 CCTM CLAIMS FOR VSRA 2.8

3.1 Claims Statements

Unique Reference	Claims Statements
Connectivity Control-1	The Vodafone Secure Remote Access product version 2.8 ensures that only the connectivity methods permitted by the current policy can be selected. On the user interface, only these permitted methods are displayed as live options.
Application Compliance-1	The Vodafone Secure Remote Access product version 2.8 can be configured to monitor whether one or more applications are present and active. If a required application is not running then Vodafone Secure Remote Access product version 2.8 can restart it.
Application Compliance-2	The Vodafone Secure Remote Access product version 2.8 can be configured to monitor whether one or more applications are present and active. If a required application is not running then Vodafone Secure Remote Access product version 2.8 can disconnect the connection to the network
Application Compliance-3	The Vodafone Secure Remote Access product version 2.8 can be configured to monitor whether one or more applications are present and active. If a required application is not running then Vodafone Secure Remote Access product version 2.8 can disconnect an existing VPN connection.
Application Compliance-4	The Vodafone Secure Remote Access product version 2.8 can be configured to monitor whether one or more applications are present and active. If a required application is not running then Vodafone Secure Remote Access product version 2.8 can warn the logged in user.
Application Compliance-5	The Vodafone Secure Remote Access product version 2.8 can be configured to terminate a blacklisted application which it detects running on the protected PC
Security Policy-1	The Graphical User Interface (GUI) on the Vodafone Secure Remote Access product version 2.8 displays what the current security policy is and whether the policy is complied with or not.

Security Policy-2	The Vodafone Secure Remote Access product version 2.8 only requires access to the online central management servers for policy updates. Policy enforcement continues whether or not access to the servers is currently available
Security Policy-3	The configuration of the Vodafone Secure Remote Access product version 2.8 for each user is determined by a centrally configured policy.

3.2 Existing assurance certificates

N/A

ANNEX A GLOSSARY OF TERMS

AVG	Anti-Virus Guard
GUI	Graphical User Interface
IA	Information Assurance
IL2	Impact Level 2
IL3	Impact Level 3
ISDN	Integrated Services Digital Network
IT	Information Technology
NDIS	Network Driver Interface Specification
RAM	Random Access Memory
SSL	Secure Sockets Layer.
VBS	Vodafone Business Services.
VGA	Video Graphics Array
VMC	Vodafone Mobile Connect
VPN	Virtual Private Network.
VSRA	Vodafone Secure Remote Access.

ANNEX B MARKETING STATEMENT

Vodafone Secure Remote Access enables your organisation and its employees to realise the benefits of working outside of the boundaries of the traditional office environment, with the peace of mind that your assets and data are secure. Through multiple connectivity methods, end user productivity can be maximised. Through security control, policy monitoring and enforcement, business risk can be mitigated. Finally, through intelligent reporting and visibility, remote and mobile users can be understood and managed.

VSRA is a security and connectivity wrapper which can be supplied with a wide range of security features. It is also a monitoring and reporting tool to monitor existing security applications. This flexibility means there is no need to replace existing security applications; simply add components to ensure compliance with security requirements.